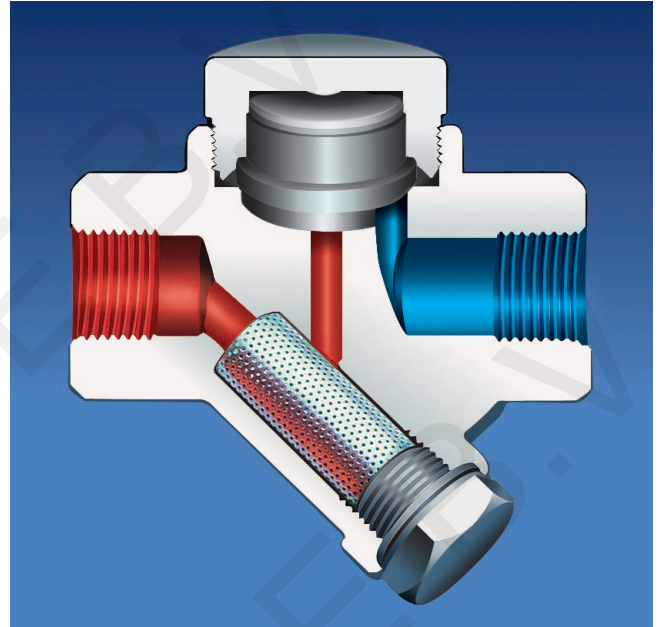


THERMODYNAMIC STEAM TRAP

Main Features

thermodynamic steam traps as well the others are designed, manufactured and tested in accordance with the DIN standards and the relevant GERMAN regulations for steam boilers (TRD) and pressure vessels (AD).

Maximum opposite pressure should not exceed 80 % of front pressure. Internal parts are all stainless steel and the body is forged steel. Discharge according to the amount of the condensate. All spare parts are available and it is easy to maintenance. Strainer is "Y" type which is under the body and easy to clean when necessary.



Typical Applications

Draying Units
Pressing Units
Steam Jacket Pipelines
Iron Machines

Installation

The steam trap should be fitted on the line horizontally for proper working.

OPERATING CONDITIONS

Max. Allowable Pressure PMA (bar)	65
Max. Allowable Temperature TMA (°C)	450
Max. Operating Pressure PMO (bar)	40
Max. Differential Pressure PMD (bar)	32
Max. Operating Temperature TMO (°C)	400

WEIGHTS

Connections	Flanged	Screwed	Butt weld
Sizes mm	15 - 20 - 25	1/2 - 3/4 - 1	1/2 - 3/4 - 1
Weights kgs	3.4 - 4.1 - 4.5	1.8 - 1.7 - 1.6	1.9 - 1.9 - 1.9

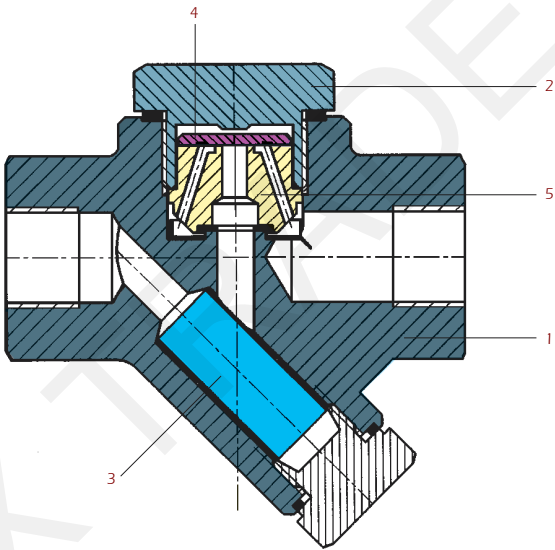
CONNECTIONS

Screwed	NPT acc. to ANSI B1 20.1 BSP acc. to BS 21
Socket weld	ANSI B 16.11
Flanged	DIN 2533

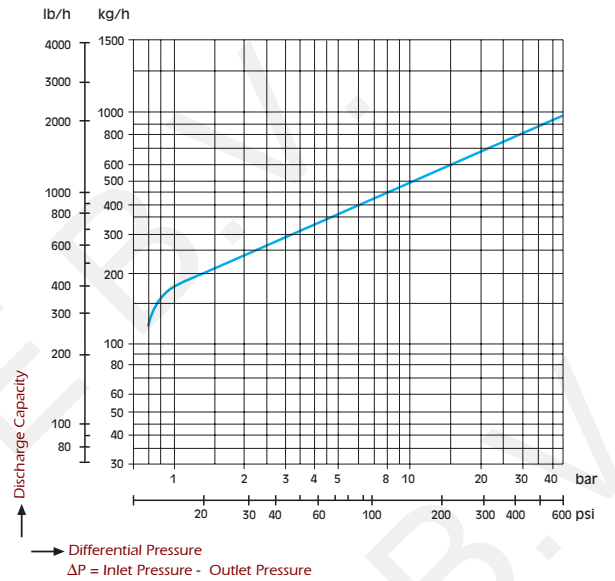
SIZES

mm	inches
15 - 25	1/2" - 3/4"

Discharge capacity of sizes from 1/2" upto 1".



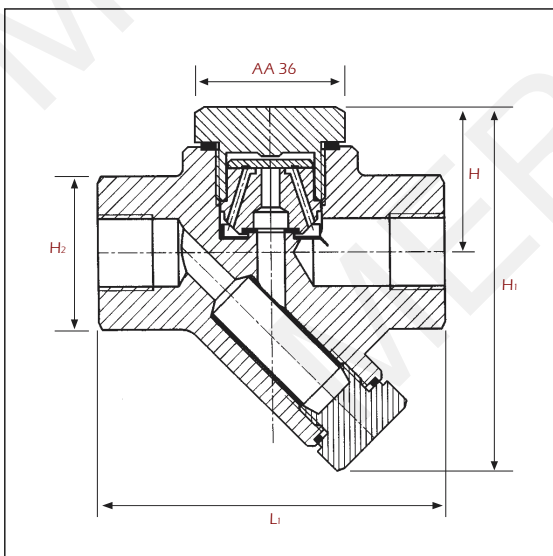
Discharge Capacities
(1/2" - 1")



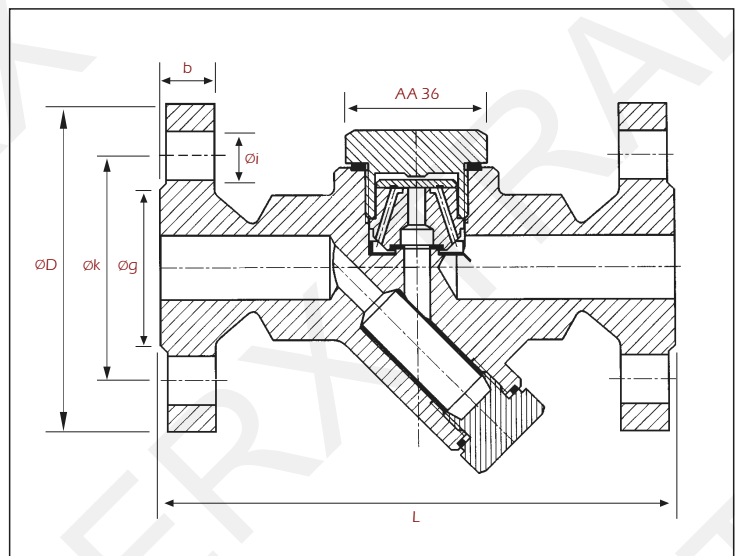
PARTS		
1	Body	Forged Steel ASTM A1 05
2	Cover	Forged Steel AISI 304
3	Cover Gasket	Stainless Steel
4	Disc	Stainless Steel
5	Seat	Stainless Steel

DIMENSIONS								
Size	L - L1	H - H1 - H2	D	b	k	g	i	No. Holes
15	150 - 95	40 - 100 - 42	95	16	65	45	14	4
20	150 - 95	40 - 100 - 42	105	18	75	58	14	4
25	160 - 95	40 - 100 - 42	115	18	85	68	14	4

MXT-11105400000



MXT-11106200000



Information provided as an indication and subject to possible modification. Colours and details can be different then shown in data sheets or pictures. Merxtrade BV has no liability for any damages by use off any information, displayed on these pages.